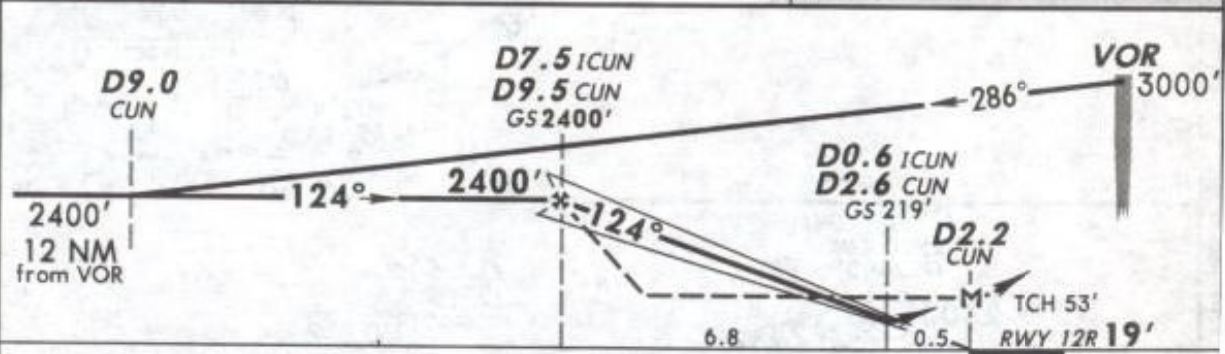
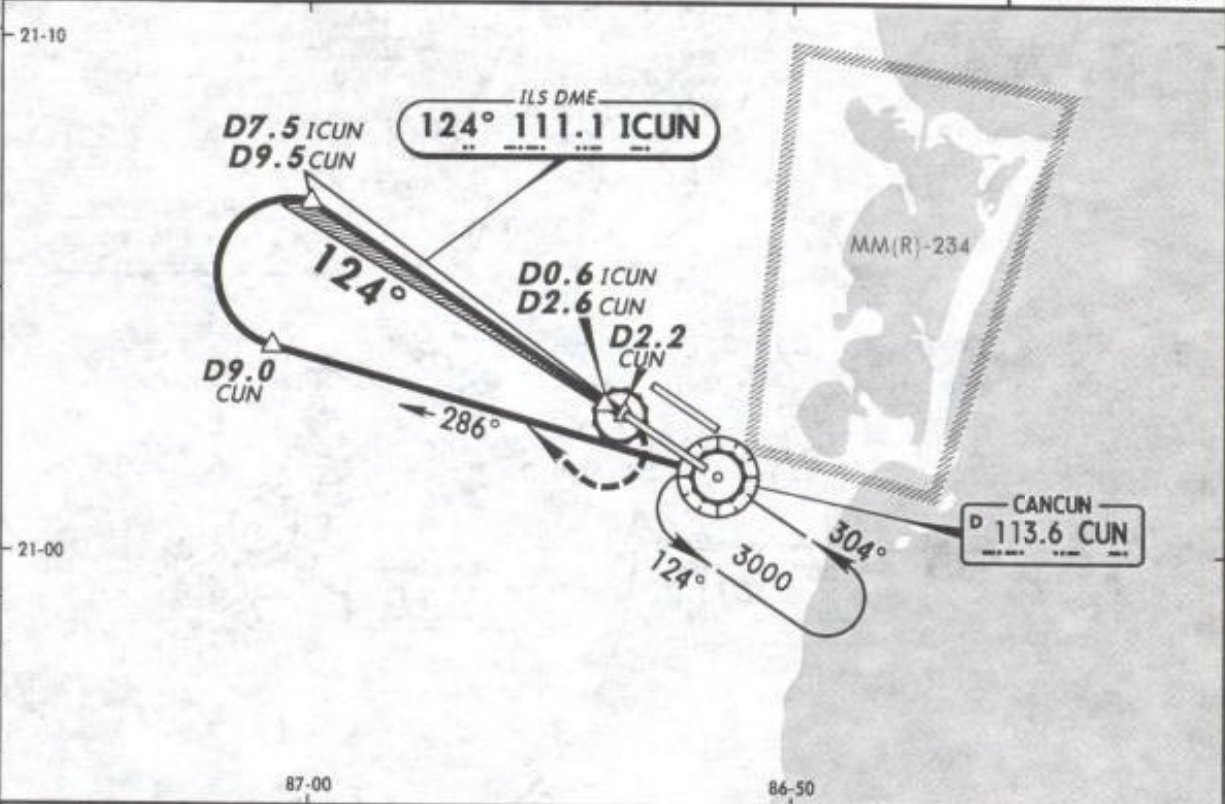


*ATIS 127.7	*CANCUN Approach (R) 121.1	CANCUN Arrival 123.2	CANCUN Tower 118.6	*Ground 121.7
LOC ICUN 111.1	Final Apt Crs 124°	GS D7.5 ICUN D9.5 CUN 2400' (2381')	ILS DA(H) (CONDITIONAL) 219' (200')	Apt Elev 20' Rwy 12R 19'
<p>MISSED APCH: RIGHT turn to intercept CUN VOR R-286 outbound to D9.0 CUN, then turn RIGHT to intercept CUN VOR R-304 inbound to CUN VOR to the minimum holding altitude.</p> <p>Alt Set: MB (IN on req) Rwy Elev: 1 MB Trans level: FL 195 Trans alt: 18500'</p> <p>1. DME/ILS usable with DME equipped aircraft with accurate instrument reading within 0.2 NM.</p>				 <p>2000'</p>
				MSA CUN VOR



Gnd speed-Kts	70	90	100	120	140	160	
GS 3.00°	377	484	538	646	753	861	
MAP at D2.2 CUN							

STRAIGHT-IN LANDING RWY 12R					CIRCLE-TO-LAND	
ILS		LOC (GS out)		Not Authorized Northeast of Rwy 12R/30L		
DA(H) 219' (200')		MDA(H) 420' (401')				
FULL		ALS out		Max Kts	MDA(H)	
A	1/2	3/4	1	90	480' (460') - 1	
B				120	480' (460') - 1 1/2	
C				140		
D				1	1 1/4	165
ALL Non Skd	DA(H) 271' (252') 3/4	1	1 1/4	1 1/2		